



# CROWNING GLORY

A MASTERPIECE  
—OF—  
TIMELESS ELEGANCE



INTRODUCING



SECTOR 84, GURUGRAM



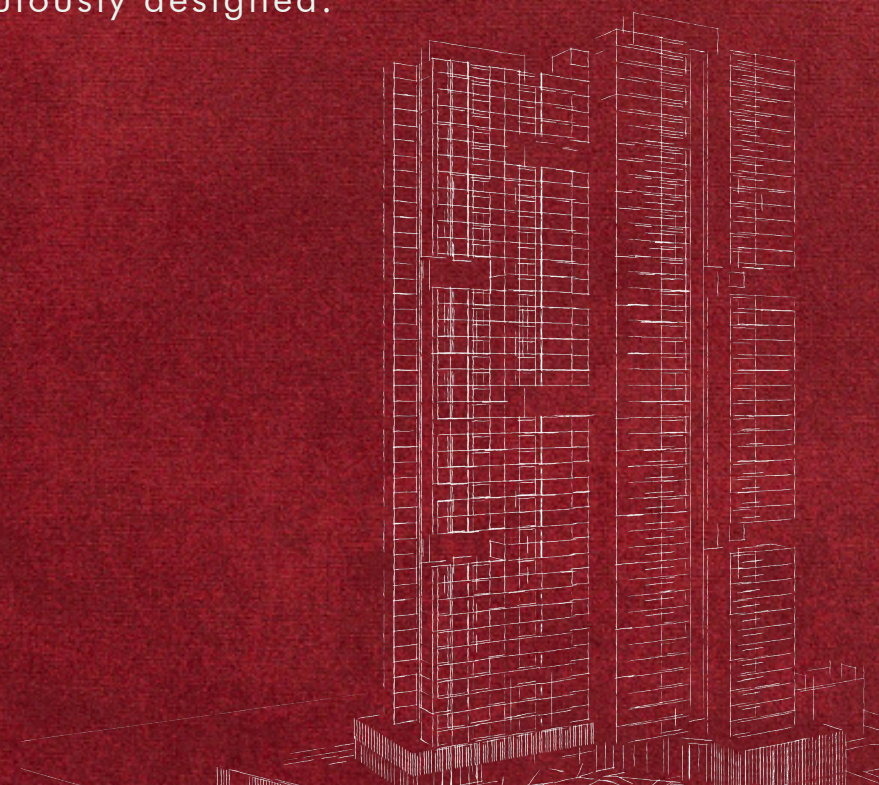
FOR SALES QUERY: 99-1103-1102





## Introduction: An Ode to Exquisite Living.

In Sector 84's embrace, where 4.6875 acres unfurl,  
Signature Global Twin Tower DXP stands, a legend for the world.  
Excessively grand, high-end in every line,  
An ultra-luxurious masterpiece, meticulously designed.



In the heart of Sector 84, Signature Global Twin Tower DXP stands as a testament to architectural brilliance and timeless elegance. Spread across 4.6875 acres of meticulously planned landscape, this residence is more than just a building; it's a masterpiece awaiting its place in history. Designed for the discerning few who appreciate the finer things in life, Signature Global Twin Tower DXP offers an unparalleled blend of luxury, spaciousness and meticulous attention to detail. It promises to be not just a home, but a cherished legacy for generations to come.

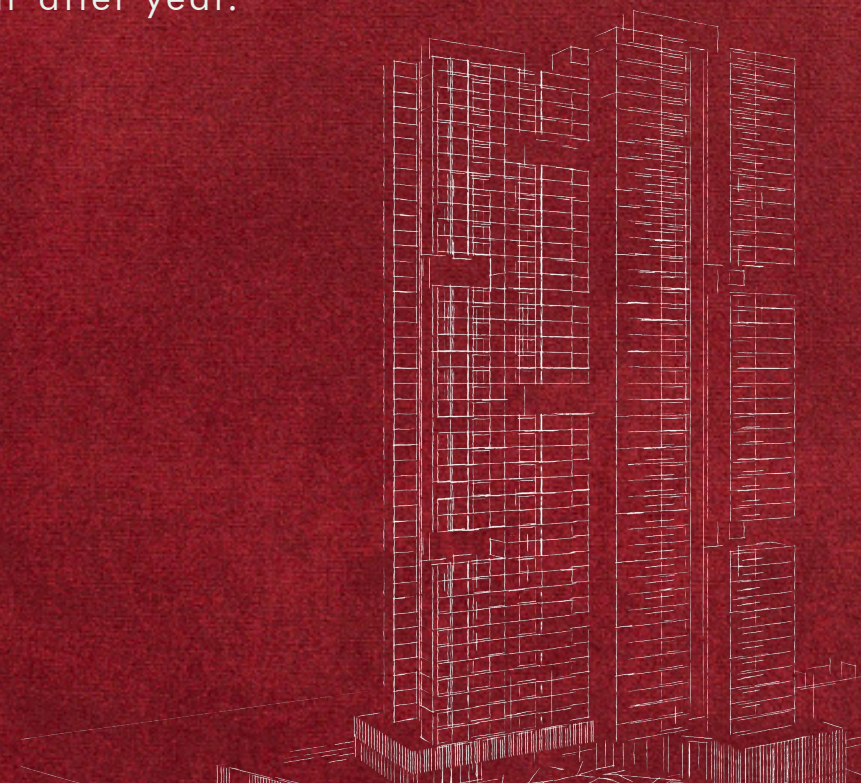




## A Masterpiece of Architectural Design.

Crafted with precision, every corner a sight,  
Where space meets luxury in perfect light.

Each detail meticulously placed, a testament clear,  
To the art of fine living, cherished year after year.



**FOR SALES QUERY: 99-1103-1102**

---

At Signature Global Twin Tower DXP,  
architectural excellence  
meets artistry. Every aspect of its design  
reflects meticulous planning and precise space  
utilization, ensuring that each residence is a  
sanctuary of luxury and comfort.

From expansive living spaces adorned with  
high-end finishes to panoramic views that  
capture the essence of Gurugram's skyline,  
every detail has been thoughtfully curated to  
exceed expectations. It stands as a beacon of  
modernity and sophistication, where  
residents can truly experience the  
pinnacle of urban living.

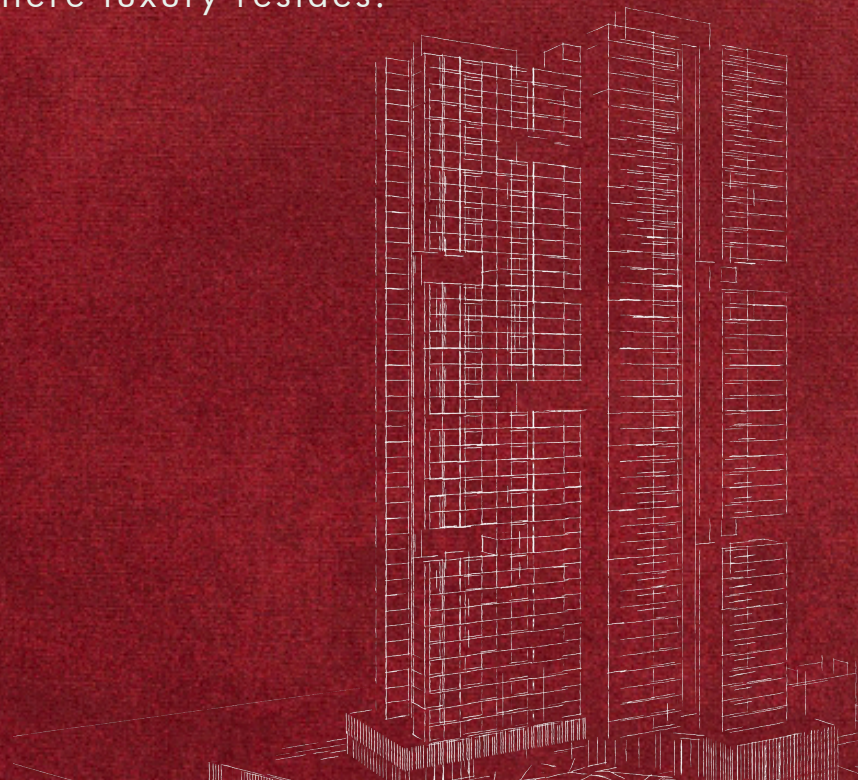
---





## A Prized Legacy, Owned by the Discerning Few.

More than just a home, it's a legacy to hold,  
For those who cherish space and stories untold.  
Spaciousness reigns, where dreams unfold wide,  
In Signature Global Twin Tower DXP, where luxury resides.



---

Beyond its architectural splendour, Signature Global Twin Tower DXP embodies exclusivity and prestige. It is crafted not just as a residence, but as a prized legacy that can be owned by a select few who value sophistication and refinement. The spaciousness of each apartment is complemented by amenities that redefine luxury living, ensuring that every moment spent here is filled with comfort and elegance. This is a residence where dreams take shape and lifestyles are elevated to extraordinary heights.

---





## A Sculpted Verdant Tranquillity. Royalty in Serenity

Amidst lush internal landscapes, feel the gentle whisper of a serene embrace, Where nature's beauty and luxury interlace.

A sanctuary where hearts and dreams align,  
In Signature Global Twin Tower DXP, where moments define.



With in-house lush green landscapes and serene gardens, Signature Global Twin Tower DXP offers a tranquil escape from the hustle and bustle of city life. Here, residents can unwind and rejuvenate amidst curated natural beauty, creating a harmonious balance between urban sophistication and internal natural serenity. It's a place where peace and tranquillity converge, offering a retreat that nourishes the soul and refreshes the spirit.





## Connectivity, Seamlessly Defined for the Majestic High-Rise.

On the Dwarka Expressway, a privileged sight,

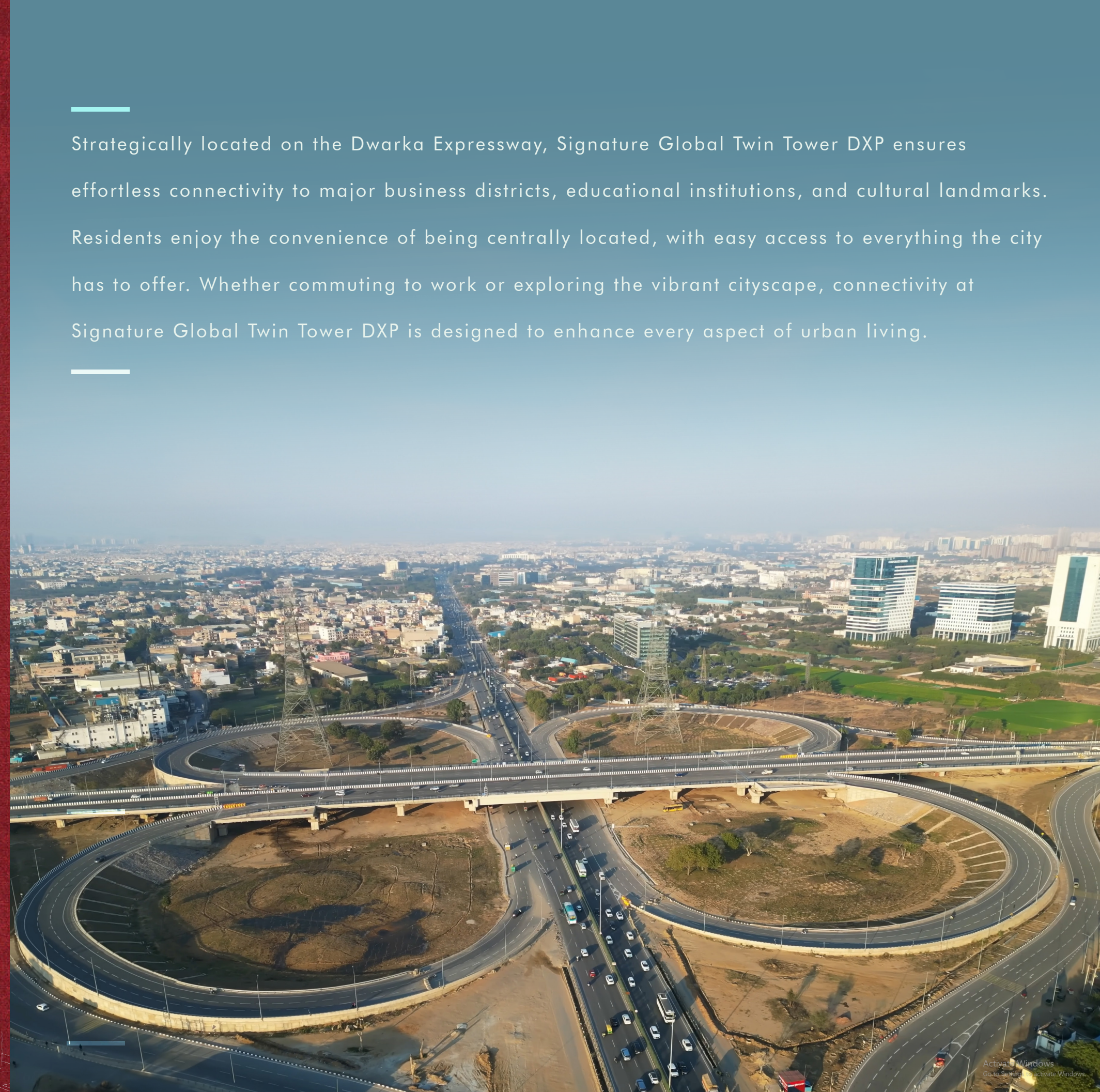
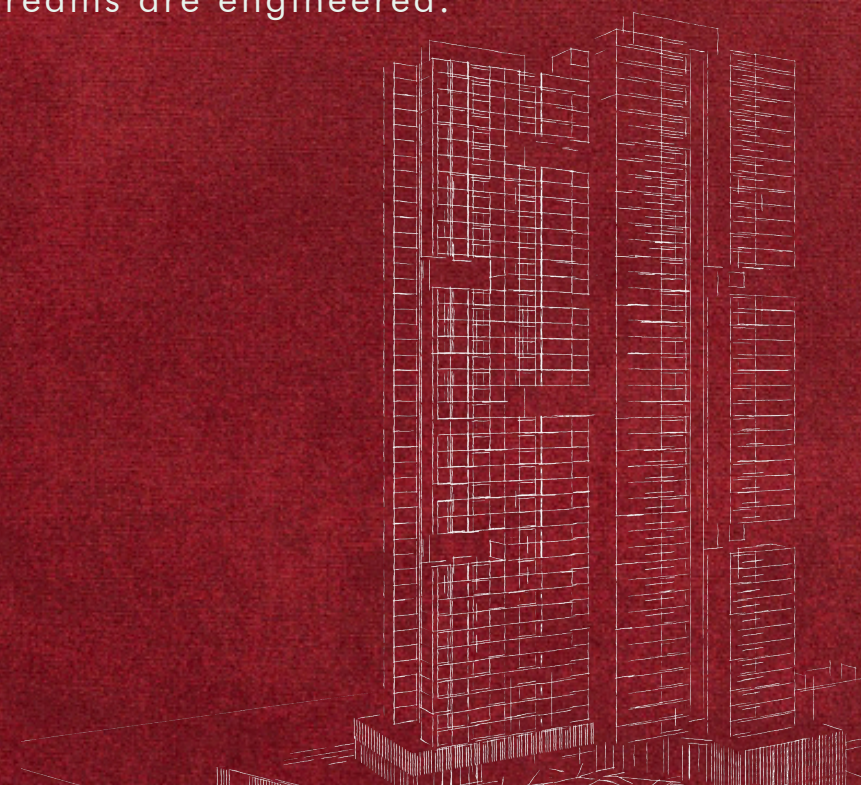
Connectivity seamless, journeys take flight.

To business hubs, and schools revered,

In Signature Global Twin Tower DXP, dreams are engineered.

**FOR SALES QUERY: 99-1103-1102**

Strategically located on the Dwarka Expressway, Signature Global Twin Tower DXP ensures effortless connectivity to major business districts, educational institutions, and cultural landmarks. Residents enjoy the convenience of being centrally located, with easy access to everything the city has to offer. Whether commuting to work or exploring the vibrant cityscape, connectivity at Signature Global Twin Tower DXP is designed to enhance every aspect of urban living.







## Curated for Connoisseurs to Elevate Their Experience.

Indulge in high-end amenities, a lavish delight.

Spacious lounges, and a fitness haven,

In Signature Global Twin Tower DXP, where luxury is given.



---

Indulge in a lifestyle of unparalleled luxury and comfort with a host of high-end amenities at Signature Global Twin Tower DXP. From a clubhouse and lavish pool with breathtaking views to a state-of-the-art fitness centre, every amenity is crafted to cater to the discerning tastes of its residents. It's a place where leisure meets sophistication, ensuring that every day is a celebration of refined living and extraordinary experiences.

---



## Discover Your Own Regal Realm at Signature Global Twin Tower DXP.

Embrace the legend, where luxury sings,

In every detail, where elegance springs.

A masterpiece, a legacy, a cherished place,

In Signature Global Twin Tower DXP, where

luxury and royalty embrace, and every nook

and corner exudes grandeur and grace.

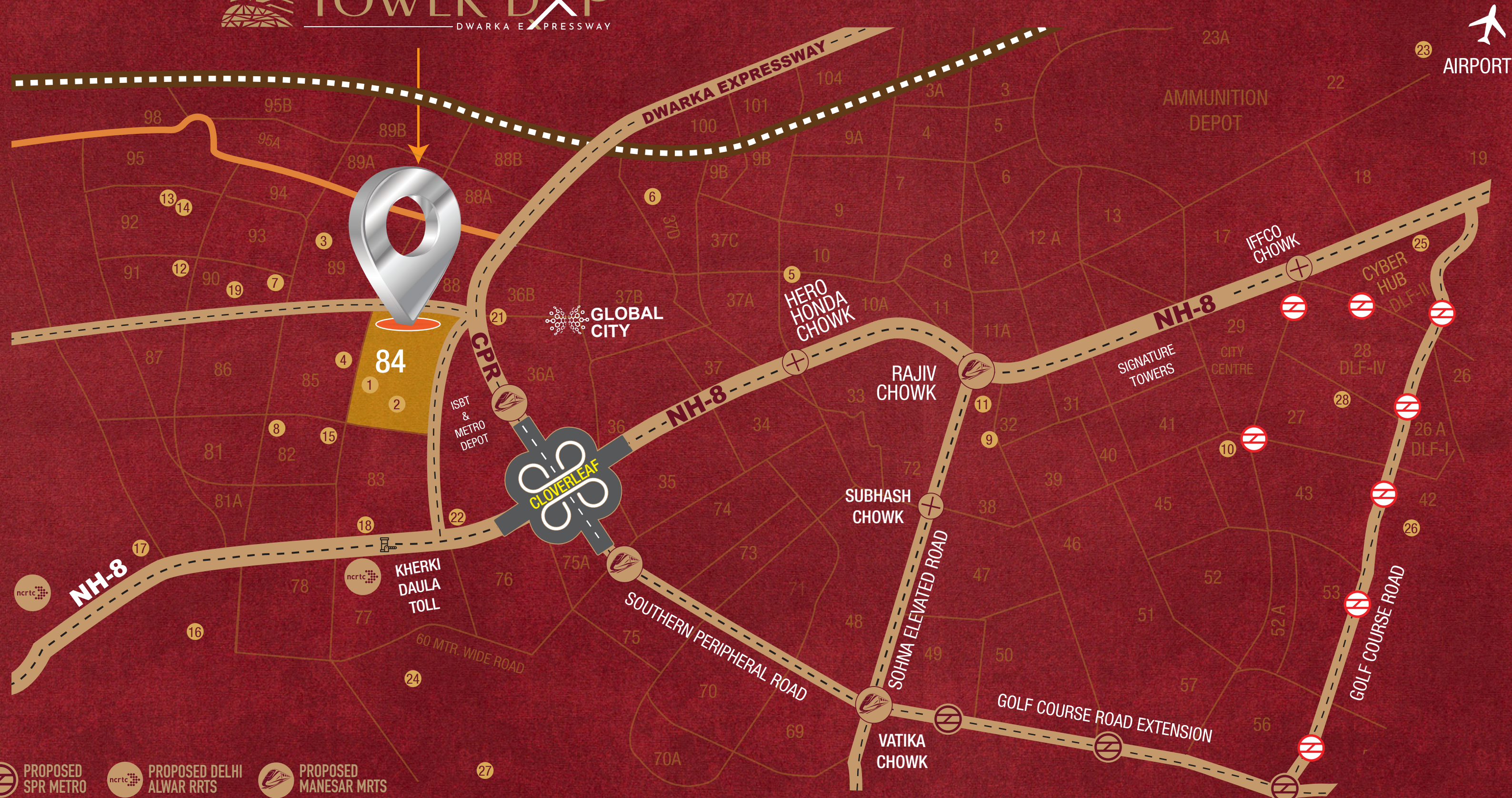


Experience the epitome of urban living at Signature Global Twin Tower DXP, where every detail tells a story of elegance and exclusivity. This is more than just a residence; it's a sanctuary where dreams flourish and memories are made. Secure your place in this architectural masterpiece and redefine your lifestyle amidst the splendour of Gurugram's skyline.

*Own your piece of elegance today at Signature Global Twin Tower DXP.*



# LOCATION MAP



Map shown here is based upon Google maps



## Luxurious Residential Arrival Experience through LushGreen Landscape

Arrive in style amidst beautifully  
landscaped greenery, setting  
the stage for the elegance and  
tranquillity within

Signature Global Twin Tower DXP.

**FOR SALES QUERY: 99-1103-1102**







## Vehicular Drop-off Area like a Lavish Entrance Welcoming with Open Arms

Experience a grand entrance  
at Signature Global Twin  
Tower DXP's spacious drop-off  
area, ensuring a seamless  
transition from the bustling  
outside world to  
the serene interior.

**FOR SALES QUERY: 99-1103-1102**

IMAGE FOR REPRESENTATION ONLY.



## Triple-Height Grand Entrance Lobby with Reception & Seating Lounge

Step into luxury at the breathtaking triple-height lobby, featuring plush seating and a welcoming ambiance, creating a sophisticated living experience.







IMAGE FOR REPRESENTATION ONLY.

## An epitome of luxury and style

The GEM, where every detail  
is crafted to elevate your  
family's lifestyle. Indulge in  
premier leisure and  
entertainment amenities that  
seamlessly blend comfort and  
class, creating the perfect  
sanctuary for moments of  
relaxation and togetherness.





## Screened Balconies and Open Balconies for Breathtaking Views

Enjoy panoramic cityscape  
views from both screened and  
open balconies, providing the  
perfect spaces to relax  
and unwind.

**FOR SALES QUERY: 99-1103-1102**



IMAGE FOR REPRESENTATION ONLY.



---

## Grand Entrance

A stylish, comfortable space designed for relaxation and socializing.

---



---

## Fine Dining Restaurant

An upscale restaurant offering exquisite cuisine, where you can dine outdoors and enjoy fresh air.

---



---

## Multi-purpose Hall

A versatile space for events and gatherings within Signature Global Twin Tower DXP, catering to various community and residential needs.

---



---

## Gymnasium

Stay fit with a well-equipped gymnasium, offering state-of-the-art exercise equipment and facilities.

---





---

# Indoor Sports Facility

Engage in various indoor sports activities, promoting fitness and recreation for residents of all ages.

---



---

# Mini Theatre

Enjoy private screenings and entertainment, providing a cozy immersive cinema experience.

---



---

# Co-working Space

A dedicated area for work and collaboration, equipped with modern amenities to support professional endeavours.

---



---

# E-Library

Access a wealth of knowledge and resources at the e-library, ideal for quiet study and leisure reading.

---





---

## Yoga

Find peace and serenity on the dedicated yoga deck, perfect for meditation and yoga sessions amidst scenic surroundings.

---



---

## Lounge Deck

The Lounge Deck is an elegant outdoor area featuring comfortable seating and stylish decor, perfect for lounging, socializing, and taking in beautiful views while enjoying the outdoors, alongside the swimming pool.

---



---

## Swimming Pool

Refresh and unwind at the sparkling swimming pool, providing a relaxing retreat for residents to enjoy leisurely swims.

---



IMAGE FOR REPRESENTATION ONLY.



# BENOY

Benoy is a global design collective specializing in Master planning, Architecture, and Interiors. They blend creative vision with commercial insight to craft iconic, impactful spaces that enhance lives and communities, supported by studios across key international locations.

The logo for modarchindia features a green grid icon to the left of the text "modarchindia" in a lowercase, sans-serif font.

Modarchindia is a leading multidisciplinary architecture and engineering firm with a skilled team of architects, planners, interior designers, and landscape consultants. Known for diverse, high-quality design solutions and expertise in advanced software, we excel in meeting client needs.

# MPFP

MPFP pllc is a globally acclaimed landscape architecture and urban design firm, known for pioneering innovative approaches to urban and global spaces. By blending progressive and traditional strategies, their expert team applies over 90 years of experience to create transformative, context-sensitive designs.

# S BOSE

LANDSCAPE ARCHITECTS

S. Bose Landscape Consultants excels in Landscape Architecture and Urban Planning. Operating from Connaught Place and Panchsheel Park, Delhi, the firm delivers professional services across various regions in India and internationally.

The logo for cespl features the text "cespl" in a bold, sans-serif font. The "ce" is green, and the "spl" is dark blue.

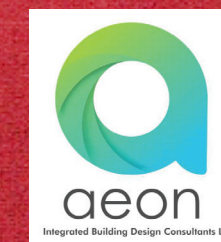
CESPL is a leading engineering consultancy with over 36 years of experience offering comprehensive services for building, township, and infrastructure projects. We specialize in Plumbing, Electrical, Fire-Fighting, HVAC, Green Buildings, and Infrastructure Design, serving major residential, commercial, and institutional clients across India.

# manish consultants

Manish Consultants is a top structural engineering firm specializing in planning and design for buildings, roads, and large-span structures. They integrate multidisciplinary expertise and innovative solutions, emphasizing client-focused, tailored approaches to meet unique project needs.



With 29 years of extensive experience in structural design, NNC Design International excels in a wide array of projects including multistorey buildings, residential and commercial complexes, hotels, factories, and large-span structures. Notable contributions include Eden Heights in Gurgaon, Ansal Town in Agra, and various group housing developments in Noida and Faridabad.



AEON Integrated Building Design Consultants LLP is a consultancy firm engaged in the design of MEP and sustainability. The team members' association with the construction industry spans over 25 years and they have worked on electro-mechanical system design for over 2000 projects across India.







AMENITIES

- ENTRANCE GARDENS
- GUARD HOUSE
- ENTRANCE BOULEVARD
- TOWER ENTRANCE DROP OFF
- LEISURE POOL
- KID'S POOL
- LAP POOL
- TERRACE GARDENS
- HALF BASKETBALL
- MIYAVAKI FOREST

- 4.5 BHK UNIT
- 3.5 BHK UNIT
- 3 BHK UNIT



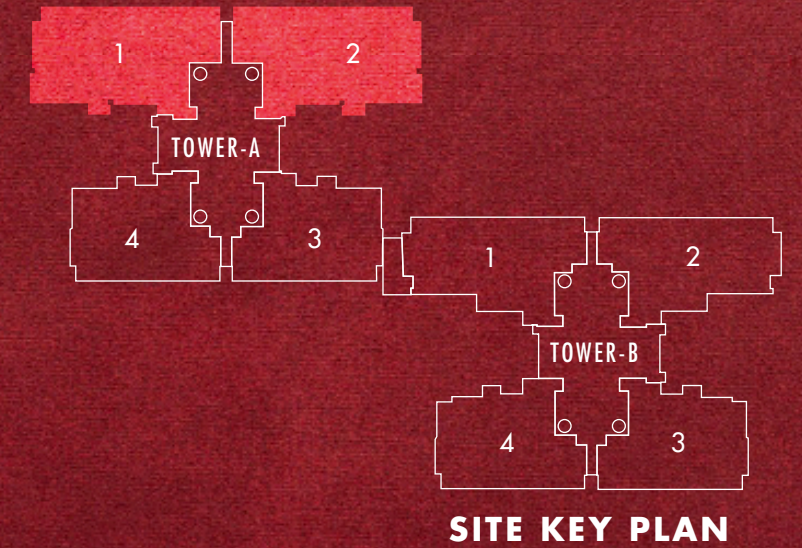
## 4.5 BHK UNIT PLAN

ENTRANCE FOYER + LIVING & DINING + FAMILY LOUNGE

KITCHEN + POWDER ROOM + PUJA

MASTER BEDROOM + JUNIOR MASTER BEDROOM

2 BEDROOMS + 4 TOILETS + UTILITY ROOM





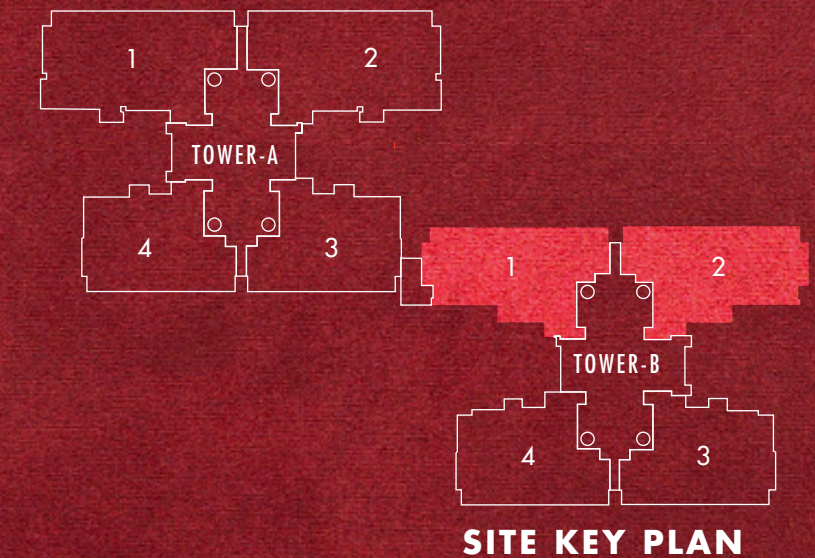
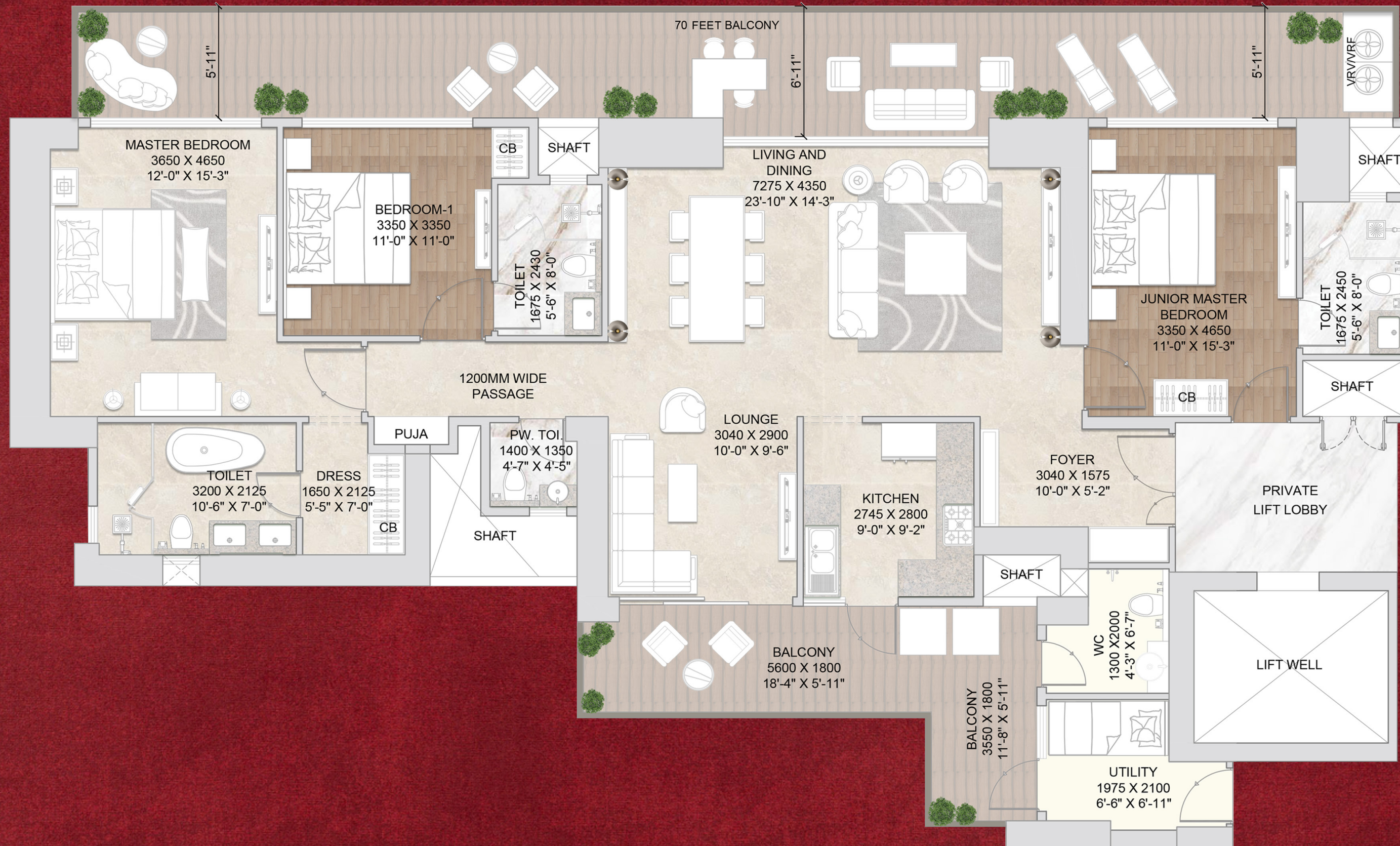
## 3.5 BHK UNIT PLAN

ENTRANCE FOYER + LIVING & DINING + FAMILY LOUNGE

KITCHEN + POWDER ROOM + PUJA

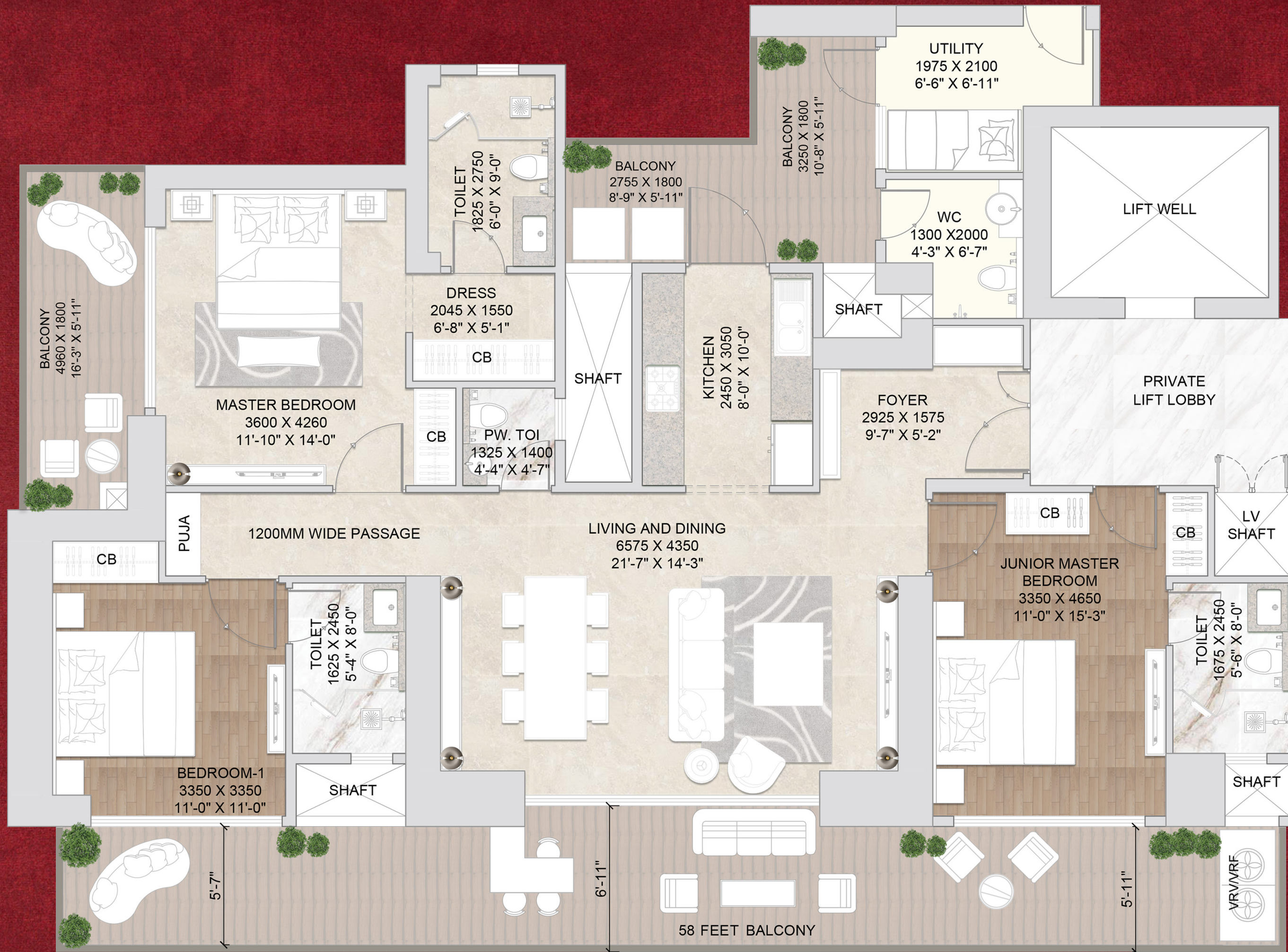
MASTER BEDROOM + JUNIOR MASTER BEDROOM

1 BEDROOM + 3 TOILETS + UTILITY ROOM



FOR SALES QUERY: 99-1103-1102





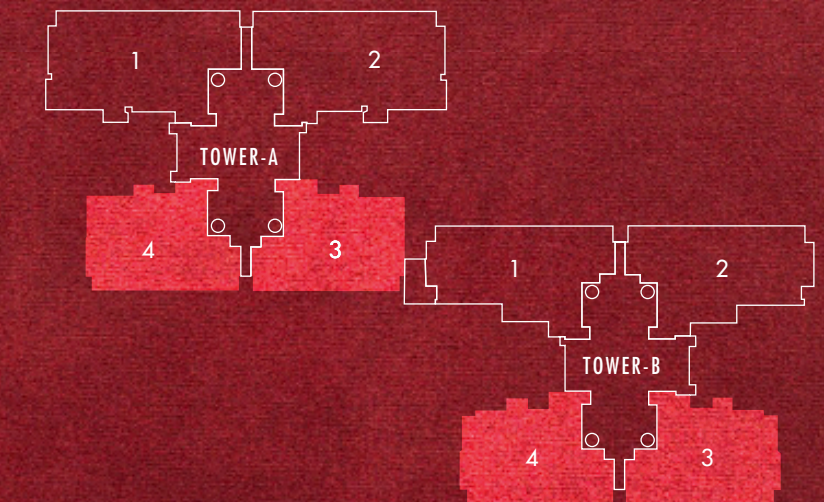
## 3 BHK UNIT PLAN

ENTRANCE FOYER + LIVING & DINING

KITCHEN + POWDER ROOM + PUJA

MASTER BEDROOM + JUNIOR MASTER BEDROOM

1 BEDROOM + 3 TOILETS + UTILITY ROOM



SITE KEY PLAN





## SIGNATURE GLOBAL: ELEVATING REAL ESTATE WITH VISION AND INTEGRITY

Signature Global, India's leading real estate developer, redefines the affordable and mid-housing segments with a focus on quality, reliability, and global standards. Our journey began in 2014, and in less than a decade, we hold a 13% market share in Delhi NCR in our focused segment.

Founded by seasoned professionals with extensive experience in the capital market, we are backed by marquee investors like HDFC and IFC, adhering to high corporate governance. As a listed company since September 2023, we continue to expand our

operations, having delivered over 11 million square feet and with ongoing projects in 16.4 million square feet area, along with a robust forthcoming pipeline of 29.6 million square feet. We maintain a disciplined approach to land acquisition, positioning projects strategically across key locations of Delhi NCR. Our brand recognition, quality products, and competitive pricing drive substantial sales during project launches. With an integrated development model and sustainable practices, we are EDGE certified and committed to environmental responsibility.

Our vision sets us apart as we strive to create projects that redefine excellence. With a focus on meticulous detail, superior quality, and innovative design, we aim to deliver unparalleled experiences across residential, commercial, and retail segments. Despite being a young company, we boast a diversified presence in real estate and are poised to leave a lasting mark on the industry. Welcome to a new era of luxury living.

**FOR SALES QUERY: 99-1103-1102**







IMAGE FOR REPRESENTATION ONLY.

